

UNITED STATES PUBLIC LAND SURVEY CORNER CERTIFICATE FOR

Land survey monuments situated in Section 26, Township 107 North, Range 40 West, of the Fifth Principal Meridian, Murray County, Minnesota..

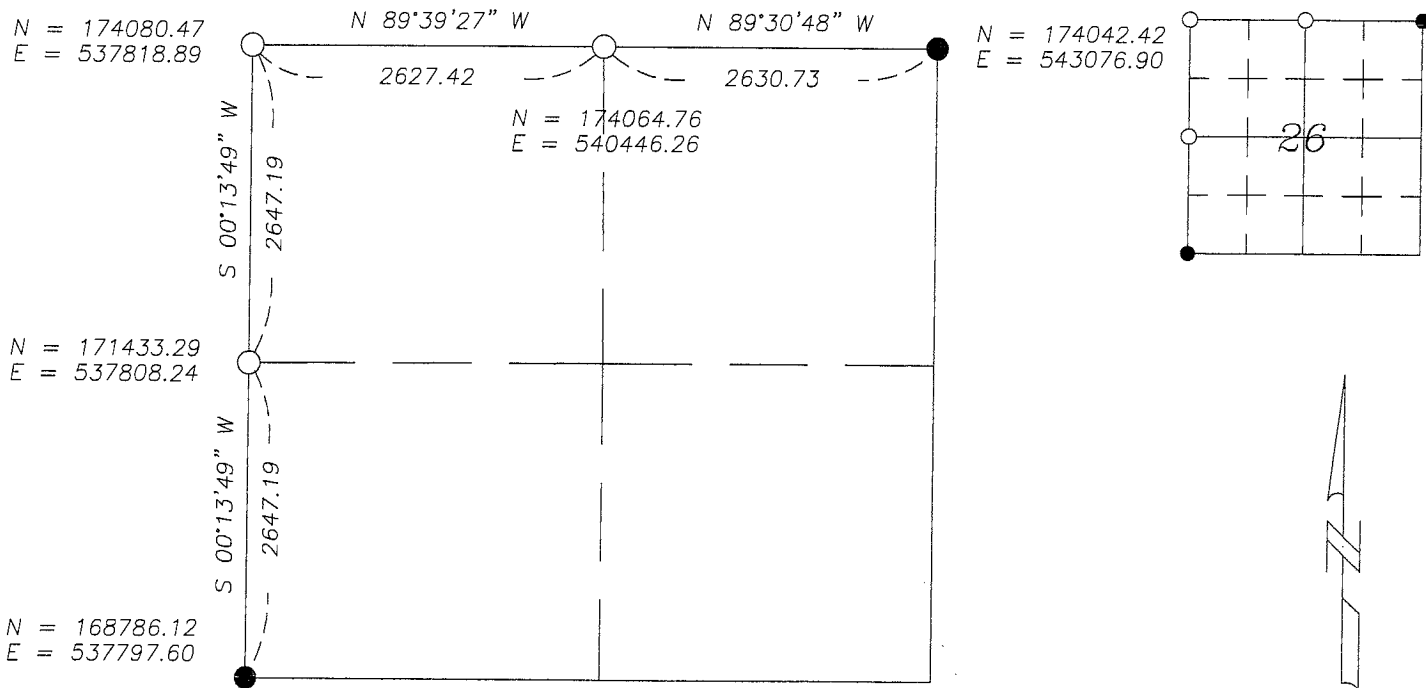
Previously recorded in N/A in County Recorder's Office.

(Show reason for preparing this certificate, the evidence and detailed procedure used in establishing the corner position & monumentation found or placed.)

MONUMENT DESCRIPTION AND REMARKS: On April 13, 2011 we dug with backhoe for North 1/4 Corner and found a 6" X 6" concrete monument with "X" in center 3' below surface. County Highway Department had no corner information. I accepted concrete monument as corner and set 5/8" Iron Stake with survey cap 23008 over top center. Also dug with backhoe for NW Corner and found no evidence of corner. County Highway Department had no corner information. I set a 5/8" Iron Stake with survey cap 23008 at equal distance from quarter corners east and west at centerline of Township Road which fits occupation and practical location. We also searched for West 1/4 corner in field and found no evidence of corner. County Highway Department indicated no information of corner. I set a 5/8" Iron Stake with survey cap 23008 midway and on line between NW & SW Corner as per PLS Instructions.

PLAN-VIEW

MURRAY COUNTY COORDINATES NAD-83 (2007)



I hereby certify that this land surveying document was prepared and related survey work was performed by me or under my direct supervision and that I am a duly licensed Land Surveyor under the laws of the State of Minnesota.

Perry L. Zieske **6-10-11**
 Signature Date
 Perry Zieske
 License number 23008

Corners to be Indexed

Corners	Section	Township	Range
N 1/4	26	107	40
NW	26	107	40
W 1/4	26	107	40

